



**PIEXX Co.**  
13 Main Street  
PO Box 123  
Hillsboro, NH 03244  
(603) 464-5411  
www.piexx.com

## JukeMP3 Wallbox Controller



**Turns your Wallbox into a Complete Jukebox**

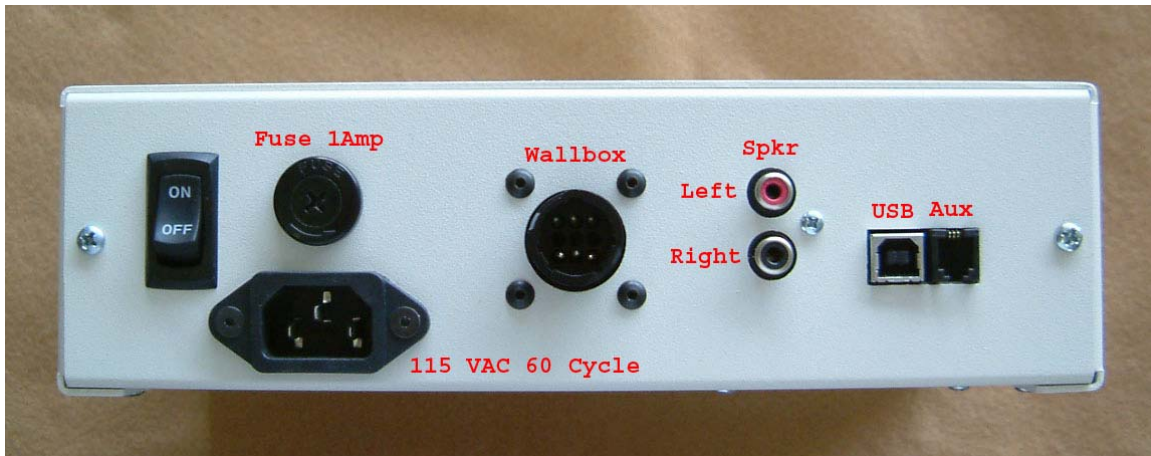
## **JukeMP3 Features:**

1. The JukeMP3 kit includes everything you need to turn your wallbox into a complete jukebox, except speakers and MP3 files.
2. The JukeMP3, a set of speakers and your wallbox make up an entire jukebox system.
3. Easy installation, just connect the included 3 connection cable to your wallbox.
4. Songs are easily added by downloading .MP3 files from your computer.
5. Windows based software allows easy song selection.
6. Label software Included! Our software allows you to print out colorful labels for your wallbox.
7. Simple computer connection via USB port.
8. Built in amplifier is ready to hook up to your bookshelf speakers.
9. Affordable cost, only \$359 + \$10 shipping / handling for the JukeMP3, software and interconnection cable.
10. Complete Systems available, including the wallbox from \$529

## Connecting Your JukeMP3 to your Computer / Speakers

Shown below is a picture of the rear panel of your JukeMP3 player. In order to get started with its operation you will need to connect the following items to the JukeMP3:

1. Power – Connect a standard computer style IEC power cord to the 115 VAC power receptacle.
2. Speakers – In order to listen to the songs that you have downloaded to your JukeMP3, you will need to connect a pair of speakers. The JukeMP3 produces approx 10 watts of audio power, per channel, when connected to a 4 ohm speaker load. You may also use an 8 ohm speaker, but you will realize slightly less audio. A pair of old stereo bookshelf speakers is ideal, although most of the new ‘mini speaker systems’ will also provide great audio. If you feel your smaller speakers are lacking in bass, or “presence” try adding a small sub-woofer in conjunction with the normal stereo speakers. You have the option to listen to songs that you have downloaded to the JukeMP3 while you are connected to your computer, so it is nice to connect a set of speakers from the start.
3. USB- Use a USB A-B cable to connect the JukeMP3 to your computers USB interface.



## Installing the USB Drivers

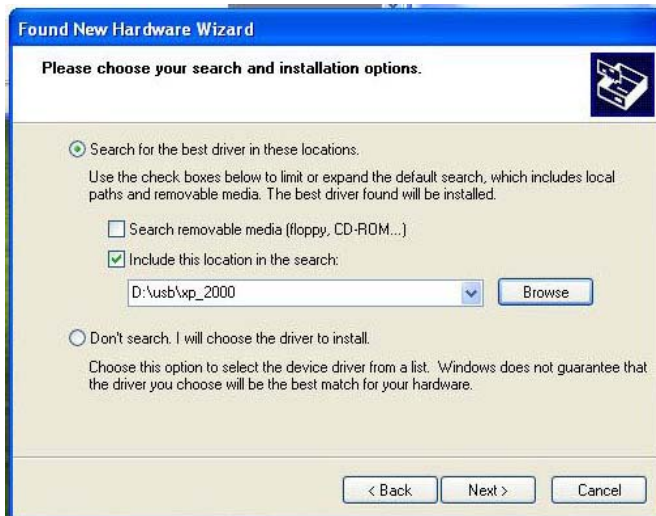
The first time you plug your JukeMP3 into your computers USB port, assuming that the JukeMP3 is turned on, you will be prompted by the Windows operating system to provide the appropriate drivers for the USB serial port. Skip to the appropriate section for XP/2000 or Win9X/WinME and follow the instructions.

### WinXP / Win2000

Make sure that you insert the installation CD into your computers CDRom drive. If a found driver window pops up, cancel it and proceed as indicated below. When you see the “Welcome to the Found New Hardware Wizard” pops up, click the “Install from a list of specific location” radio button and then click next.



Check the “Search for the best driver in these locations” radio button, check the “Include this location in the search” check box, and enter “D:\usb\xp\_2000” in the data box. Note: the D: is the drive letter that identifies your CDRom drive. If yours is other than D replace the D with the appropriate letter. Click Next.



After the system finds the appropriate driver you will see the “Completing the Found New Hardware Wizard” window. Click the Finish button.



The system will now prompt with the “Welcome to the Found New Hardware Wizard” again. Proceed as before..



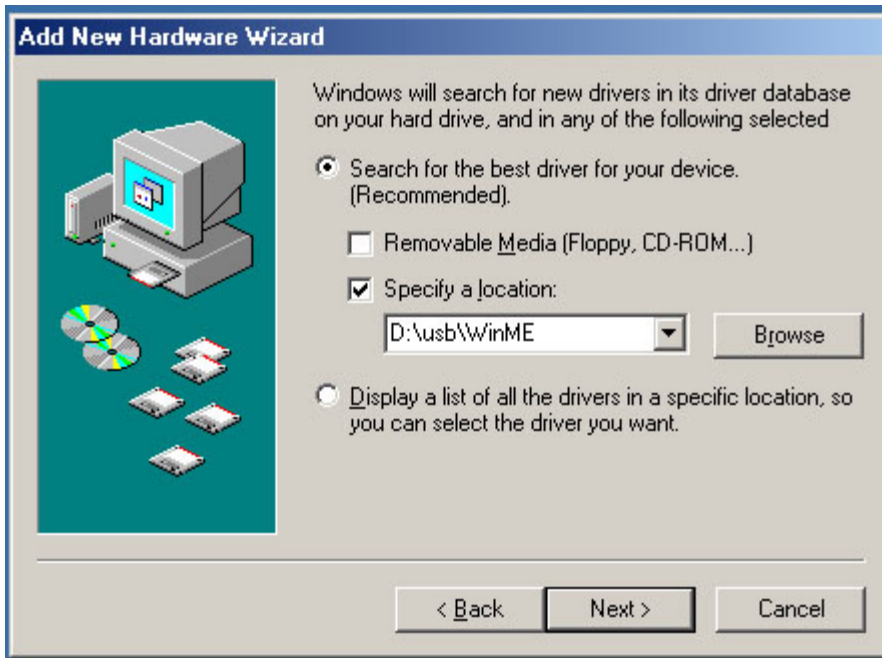


## Win9x / WinME

Make sure that you insert the installation CD into your computers CDRom drive. If a found driver window pops up, cancel it and proceed as indicated below. When you see the “Add New Hardware Wizard” pops up, click the “Specify the location of the driver” radio button and then click next.



Check the “Search for the best driver for your device” radio button, check the “Specify a location” check box, and enter “D:\usb\WinME” in the data box. Note: the D: is the drive letter that identifies your CDRom drive. If yours is other than D replace the D with the appropriate letter. Click Next

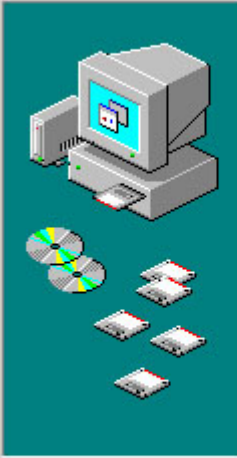


Click the Next button to continue...



Finish the installation by pressing the Finish button.

Add New Hardware Wizard



USB Serial Converter

Windows has finished installing the new hardware device.

< Back

Finish

Cancel



## Software Installation

The JukeMP3 Software is intended for operation under the Windows XP, 2000, 95/98 or Windows ME operating system. Install the software by placing the provided CD in your CDROM drive, press the Start Icon (usually in the lower left of your desktop), proceed up to and press the Run selection of the pop-up menu. In the open dialog box type:

### **D:JukeMP3\Setup**

Where **D** is the drive designator for your CDROM drive After entering the command line press enter, and the system software will be loaded.

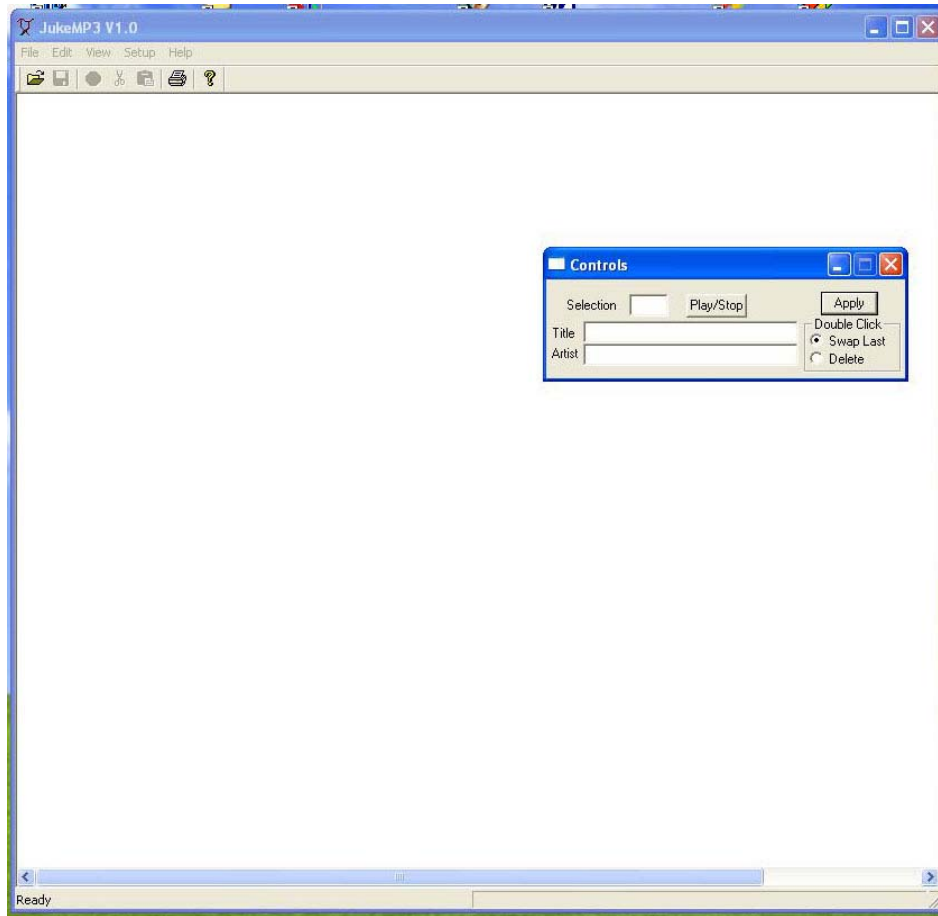
## Software Operation

Make sure that your JukeMP3 is powered up and connected to your computers USB port. If this is the first time that you have attached the USB cable to the JukeMP3, you will need to follow the driver installation instructions outlined earlier.

With power applied to the JukeMP3, start the JukeMP3 program by pressing the Start Icon and following the pop up menus to Programs, or All Programs for XP users, and finally click the Shortcut to JukeMP3.



If all is connected properly the JukeMP3 window will appear on your screen after 30 seconds or so. If this is the first time you have run the program the main information will be blank until you have transferred some songs to your JukeMP3.



## Basic Windows Operation, Moving and Resizing Windows...

If you are familiar with basic windows operation, skip this part of the instructions. *If you don't know how to resize, move highlight and cut and paste items in Windows*, please spend the few minutes it takes to understand these operations. If you can do these few, simple Windows operations, using the JukeMP3 program, as well as many other windows applications, will be *much* easier!

Generally, when a windows application, like JukeMP3, is running it will present itself to the user as viewable entity or window. This window has a size, the width and height it occupies on the screen, and a position. The position, and often but not always, the size of the window can be changed. Your ability to change the window will make operation of the program easier because you can set the size and position of the window to best suit your system configuration (viewable area of the screen) as well as accommodating multiple applications that depend on each other for their operation.

### Moving the JukeMP3 window

Shown below is the top left corner of the JukeMP3 window along with its Controls dialog box. The top bar of the window, the bar that has the "JukeMP3 V1.0" text in it as well as

the PIEXX logo, is known as the Title Bar. You can change the position of the JukeMP3 window, as well as most other windows, by:

1. Position your mouse pointer in the title bar.
2. Press down and **hold** the left button on your mouse.
3. While holding the mouse button down, slide (referred to as dragging) your mouse.
4. When the JukeMP3 window is positioned where you want it, release the left mouse button.

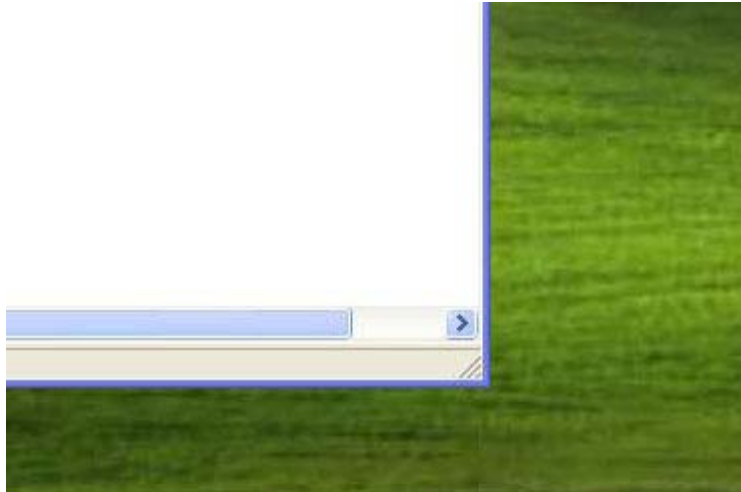


You can also move the Controls dialog box, and a good many of the other windows and icons on your desktop for that manner, using the same technique. Give it a try.

### Re-sizing the JukeMP3 window

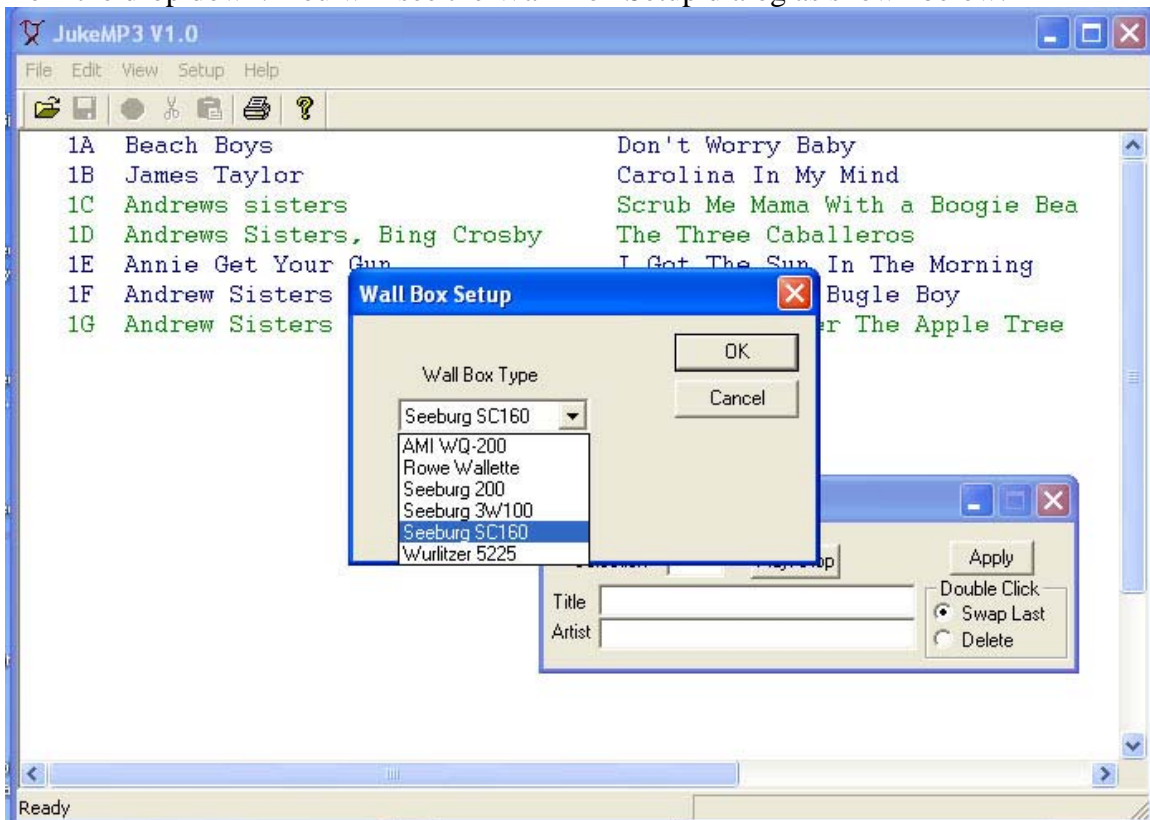
You can also change the size of most widows by:

1. Place your mouse pointer on one of the corners of the window. The bottom right corner of a window is often ndicated by 3 slanted lines, as shown in the picture below.
2. When you move the mouse pointer to the appropriate spot on the corner of the window, the mouse pointer will change to diagonal pointer line. This pointer cursor lets you know that the mouse is in the appropriate location to effect a change to the window size. Press down and **hold** the left button on your mouse.
3. While holding down the left mouse button, drag your mouse. You should notice that the window changes size.
4. When the JukeMP3, or other, window is at the size you like, release the left mouse button that you where holding in the previous step. Some windows items, like the Contols dialog box, have a fixed size; you can't resize them. If you put the mouse cursor in the corners of the Controls box, the cursor pointer doen't change to the diagonal pointer line.



## Selecting a Wallbox type

In order for the JukeMP3 to properly display information about the songs you will be downloading soon, it must know the style of wallbox that you intend to use with it. To setup this information, press the Setup button on the toolbar and then select Wall Box from the drop down. You will see the Wall Box Setup dialog as shown below:

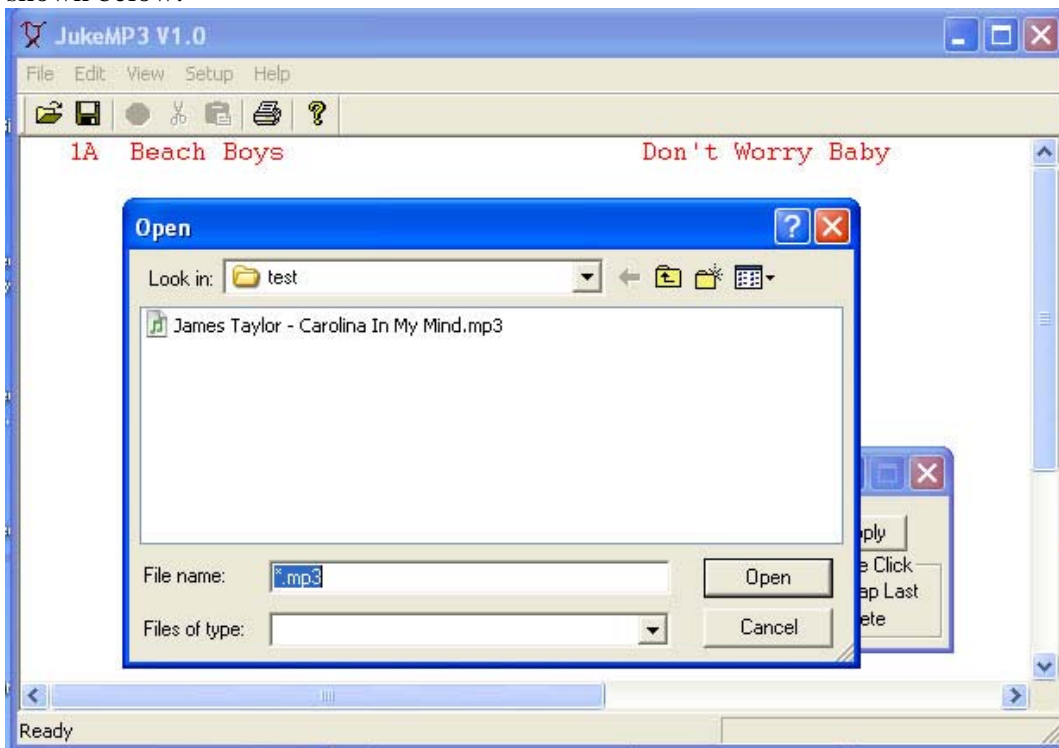


Click the pull down arrow next to the wall Box Type and click the appropriate wall box entry. Once you have made this selection, press the OK button.

***When performing data transfer and manipulations with the files on the JukeMP3, never turn off or unplug either your computer or the JukeMP3 player while the JukeMP3 application is running on your computer. Doing so will most likely result in data corruption on the JukeMP3!!!!***

## Downloading Songs

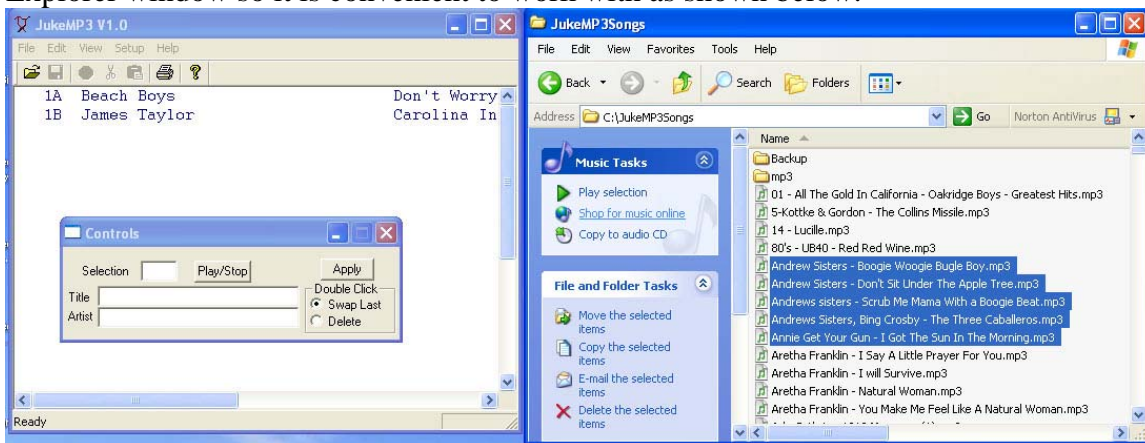
Once you have attached your JukeMP3 to your computer, you will probably want to start uploading .MP3 songs to your system. We will present two approaches to uploading songs to your JukeMP3. The first method requires that you select a song from a known directory location on your computer. Start by clicking the File menu button on the JukeMP3 menu bar then select Load MP3 from the drop down menu. As an alternative to using the menus, you can also get to this same point by pressing and holding the Ctrl button on your keyboard, and then, while holding the Ctrl button down, press the O key on your keyboard. Whichever way you do it you should see the Open dialog box as shown below.



Click the drop-down arrow next to the “Look in” data box and work your way through your computers directory structure until you locate your cache of .MP3 files. When you find the song that you would like to download, click on it, to select it, and then press the Open button. This will start the upload process transferring the song to your JukeMP3. In the bottom right corner of the JukeMP3 application window, you will see the Uploading progress bar. This progress bar will show you the transfer status of the song. After the transfer has completed, the new song will show up in the JukeMP3 applications window.

You can start a new file transfer as soon as the last one completes. Each new song will be added to the JukeMP3 window as it is downloaded.

Another, simpler, way to upload songs to your JukeMP3 is to Drag and Drop the songs from a windows explorer window onto the JukeMP3 application window. To do this start by moving and resizing your JukeMP3 window to a convenient spot on your desktop. The JukeMP3 window doesn't have to be very large to perform the following task. Next open a windows explorer window to the directory that contains your library of .MP3 files. Do this by double clicking the My Computer icon and then clicking the drive that holds your .MP3 files. On our system the .MP3 files live in a JukeMP3Songs folder on the C: drive, so, to get to them I would double click My Computer, double click the C: drive, and finally double click the JukeMP3Songs folder. Now resize and position the Windows Explorer window so it is convenient to work with as shown below.



Next select the song or songs that you would like to upload from the list of songs showing in your Windows Explorer window. You can select songs in several ways:

1. Single left click on a single file to select it and deselect all others.
2. Single left click on a file, while simultaneously holding the Ctrl key down on your computers keyboard, will select or deselect the file from a group of files that has already been selected.
3. Single left click on a single file to select it and then, while holding the Shift key down, single left click on another, different file. This process will select all of the songs between the first and last file selected.
4. Drag draw a box over a group of files. To do this, move your cursor just outside of the text of a file name, press and hold the left mouse button, and then drag (a highlighted box will grow as you do) a box to encompass those songs of interest. Release the left mouse button when you have 'boxed' what you want.

Once you have selected a file or files, position your mouse cursor over one of the selected files, press and hold the left mouse button down, and while holding the left mouse button down drag the mouse cursor over until it is positioned over the data window of the JukeMP3 application. Make sure that it is in the data area of the JukeMP3 window, not over the tool bars or the Controls dialog. Now release the left mouse button. The group of songs selected will begin to upload to the JukeMP3. As before the progress bar will show the status of a given file transfer while the status bar, located in the bottom left hand corner of the JukeMP3 window, will outline the overall status of all of the files being

uploaded. In addition, you will see a red circular button show up on the tool bar. This red button will stop the transfer of subsequent files *after* the currently loading file has completed its transfer. In other words, press the red circle to abort the upload process. Using either of the techniques just mentioned, upload as many songs to your JukeMP3 as your wallbox can select. You can load more than this number, up to 1000 songs, if you like, but your wallbox can only select as many songs as it is capable of.

### **Changing Song / Artist Names**

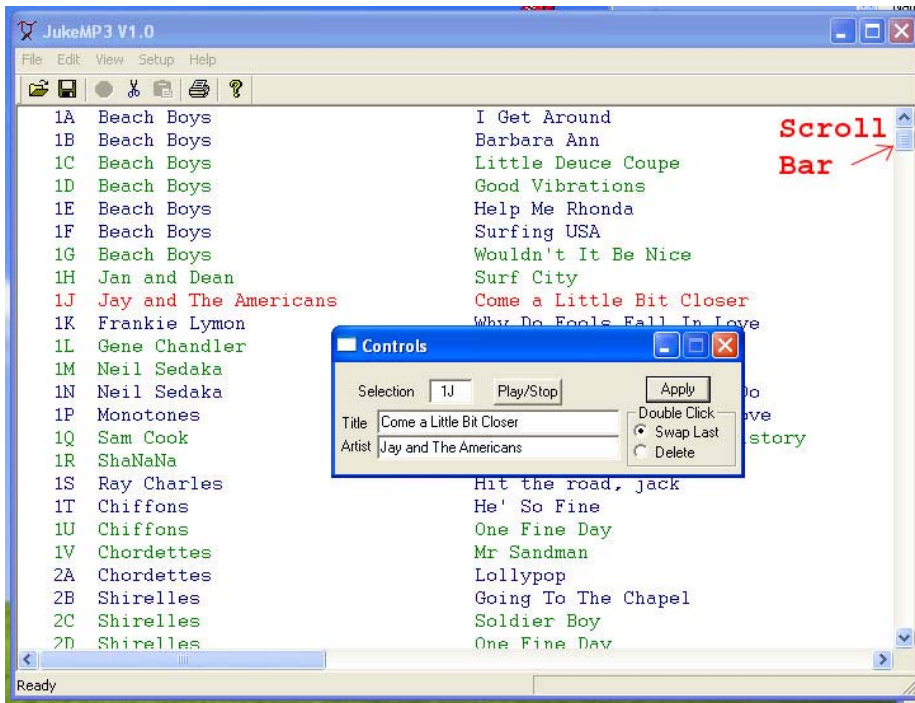
After you upload songs into your JukeMP3s memory you may want to modify the Title of the song or the Artist name. The JukeMP3 software determines these two items from the file name uploaded to the JukeMP3. .MP3 files use a convention of :

ArtistName – SongName.mp3

for filenames. If the filenames you uploaded don't conform to these conventions, then you probably won't care for the Artist name and Song name that JukeMP3 found. To modify these names click on the song, in the JukeMP3s data window, whose info you want to change. The song will change color, and you will see the Title / Artist name fields in the Controls dialog box change to those of the selected song. Update either of these data boxes by clicking your mouse in their text and modifying the text appropriately. When you are finished with your changes, press the Apply button.

### **Changing the Order of Songs in your Wallbox**

If you examine the song names in the JukeMP3s data window you will notice that to the far left of each artist name is the wallbox selection identifier. This will be the number / letter sequence you will need to press on your wall box to call up the indicated song. Don't bother trying it now, even if you have already connected your wallbox. The wallbox functions are disabled while you are in the PC Link mode. The next task you will perform is rearranging the songs so they will show up in the appropriate selection spots on your wallbox. Before starting, it is a good idea to resize the JukeMP3 window so that you can see as many songs as possible. That is, make it tall. Undoubtedly there will be more songs on the JukeMP3 than you can see on the page. Drag the scroll bar on the right side of the JukeMP3 window to see song selections that fall out of the window viewing area.



You will notice as scroll down through the list of songs, at a certain point the wallbox selection identifier changes to a ‘—’. This indicates that the selection is past the point that is selectable with your wallbox. You will need to move songs, that you would like to be able to select from your wallbox, that are prefixed with the “—“ up higher in the list.

Moving songs is most easily done with a cut and paste method which requires these four steps:

1. Highlight the songs you want to move by clicking them, dragging a selection box over them or using the Ctrl click or Shift click techniques discussed earlier.
2. Cut the selected song(s) to the end of the list. Do this by pressing the scissors button on the toolbar, selecting Edit and then Cut to End from the drop down menus, or by typing Ctrl X.
3. Position your cursor to the spot you want to move the songs to and click the song that is just below the insertion point. The song you clicked will highlight, and the insertion point will be just above this song.
4. Paste the cut songs above the highlighted song by pressing the clipboard button, just to the right of the scissors button on the toolbar. Alternatively you can paste by selecting Edit and Paste from the drop down menu or typing Ctrl V.

When you cut songs to the end of the list, the cut songs will have a > to the left of the Artist name indicating that the song is ready to be pasted.

Alternatively, you can simply drag a single song to a new location or, if the Swap Last radio button is selected in the Controls dialog box, double clicking a song will swap it with the last song in the list.


## Playing a Song

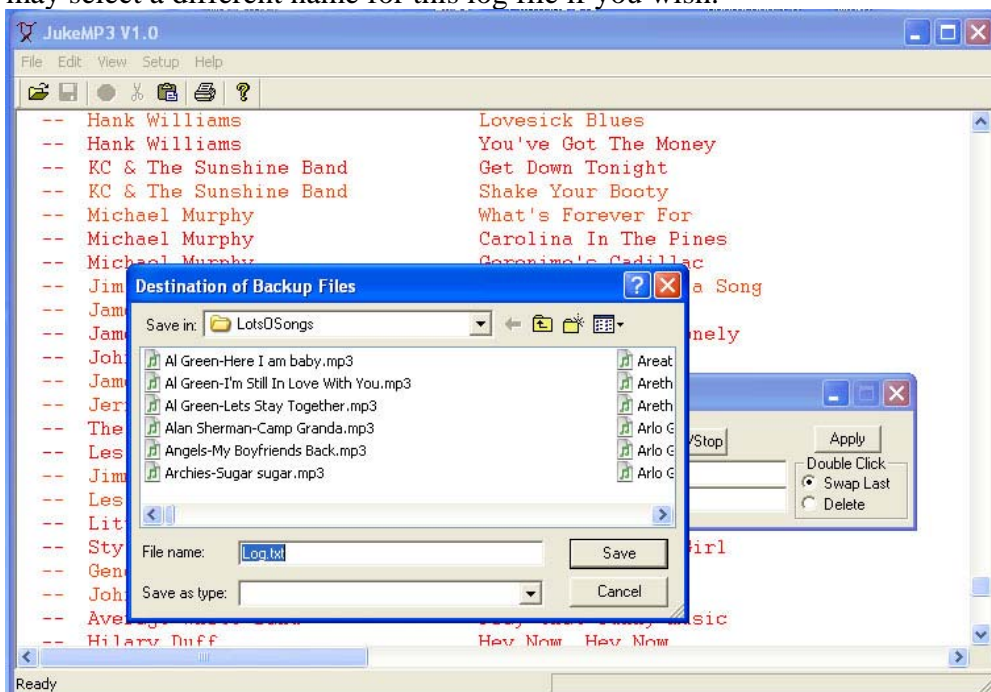


If you would like to check what a song sounds like that has been uploaded to your JukeMP3, click on the song of interest and then press the Play/Stop button in the Controls dialog box. When the JukeMP3 is in the PC Link mode, as indicated on the front panel display on the JukeMP3, none of the regular control buttons on the JukeMP3 player are active.

## Backing up Songs

After you have uploaded your songs to the JukeMP3, it would be a good idea to back them up to your computer. To perform this task you must first select which songs you would like to backup. You can use any of the previously mentioned selection techniques, or you can choose Edit and Select All from the drop down menu. The Edit + Select All technique is particularly handy because usually you will want to back up all of the songs uploaded on the JukeMP3. Next, select File and then Backup from the pull down menu. A dialog will appear requesting the Destination of Backup Files. Update the Save in field to indicate the directory of destination for your backup set. You can use this standard file dialog box to create a new directory if you wish, press the folder button that has the little

twinkle symbol in its upper right corner to do this.  The default File name is Log.txt. This file will receive a list of all of the selected songs in this backup set. You may select a different name for this log file if you wish.



After you have the backup directory and File name selected, press the Save button, the backup process will begin. As with the upload functions, you can see the status of the backup in the Status bar at the bottom of the JukeMP3 window. Also, you can terminate the backup, after the current transfer has completed, by pressing the red circular menu button.

The backup process will generate a new .MP3 file for each song that is highlighted *unless* that song already exists on your computer system in the backup directory that you specified.

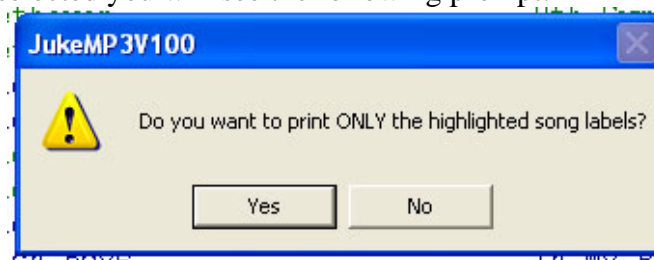
## Restoring Songs

Restoring songs will allow you to automatically upload songs to your JukeMP3 as well as setting the order of the songs as indicated in the selected Log file, usually log.txt. Start the restore process by selecting File and Restore from the pull down menus. You will see a “Destination of Restore Files” dialog appear, select the directory of your files you wish to restore and the name of the log file, usually log.txt. When you have selected the source of the restore, click the Open button; the JukeMP3 will begin the restore process.

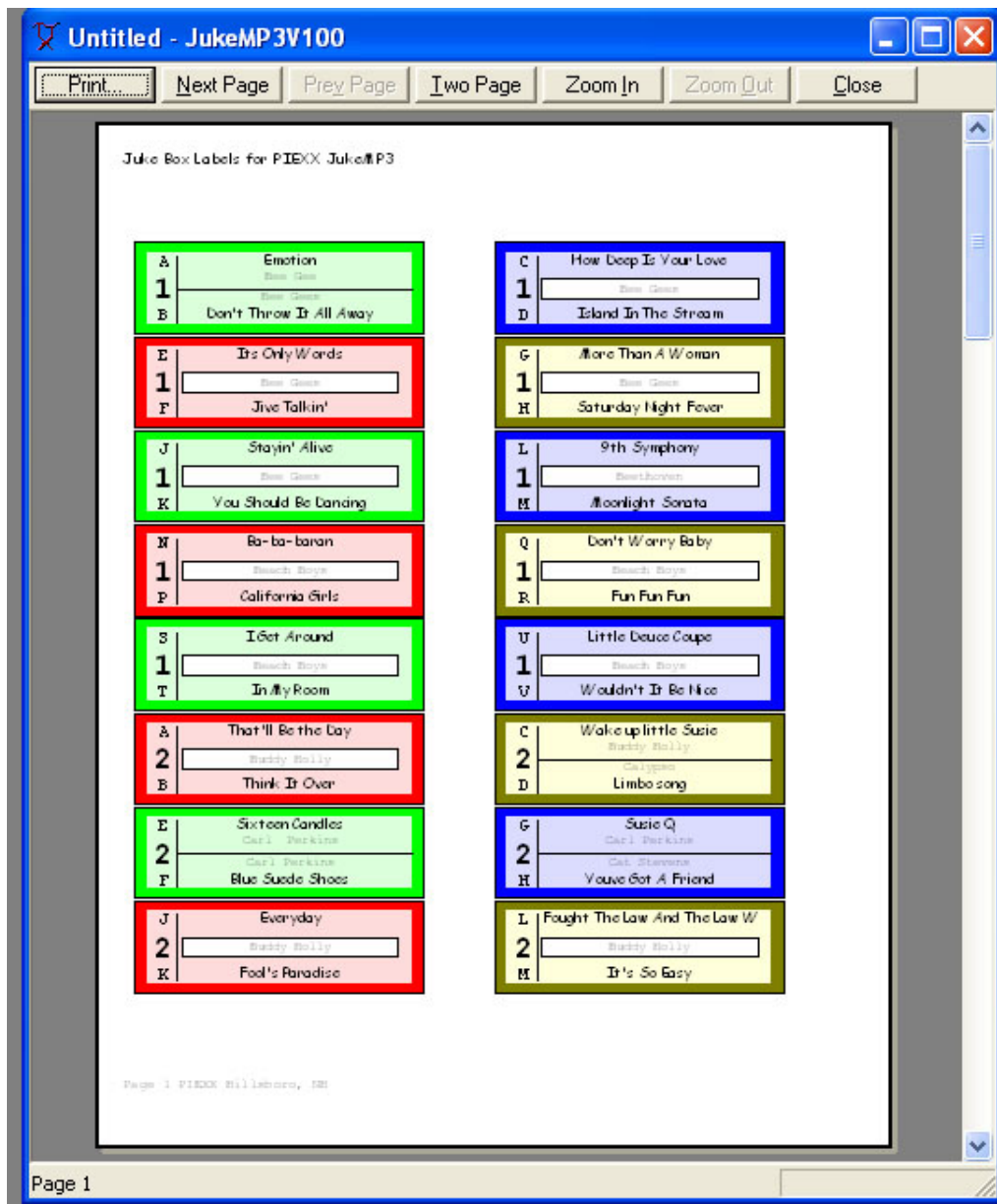
The restore process proceeds in two steps. First, the program scans the log file to determine which songs need to be loaded onto your JukeMP3. Only songs that aren't already on the JukeMP3 are uploaded to it. Secondly, the songs on the JukeMP3 are rearranged so they are in the same order as they appear in the log file.

## Printing the Wallbox Labels

After you have uploaded and arranged the songs on your JukeMP3 you will probably want to print the labels for your wallbox. If you have certain songs selected, you will be prompted as to whether to print only the selected song labels or all of the labels for your wallbox. You can clear all selected songs by pressing the Esc key on your keyboard. Start the label printing process by selecting File then Print Preview from the pull down menu. If you have songs selected you will see the following prompt:



Answering Yes will show only the selected songs labels, this is convenient for updating a few songs on your wallbox. If you answer no, or there are no songs selected you will be previewing the full set of labels.



Use the various Print Preview buttons to view all of your labels for accuracy. If there are mistakes in spelling or title names, press the close button and correct the errors.

You will notice that there are two songs per label. If the two songs have the same artist name then the artist name shows in a shadow box in the center of the label. If the artist name is different for the two songs, then there is a divider line between the two songs on the label and the two different artist names are shown. It is a good idea to try and group songs together with the same artist name. When you view the song info on the JukeMP3 data window, you will see that the names are grouped two blue then two green then two blue ect. This alternating groups of two is intended to help you keep the artist names grouped together. The two blue will fall on one label, then the next two green will fall on the next label.

Once the labels appear as you like, you can print them from either the Print Preview screen or from File and Print in the drop down menus.



## JukeMP3 Player Operation

Operation of the JukeMP3 player is very intuitive. The various functions of the buttons is outlined below:

**Reset-** Pressing the reset button will terminate the currently playing song. If you have selected multiple songs from your wallbox, Reset will terminate only the currently playing song allowing the other selections to proceed in order. If you press and hold the Reset button for about ½ second, all of the queued up songs will be cancelled.

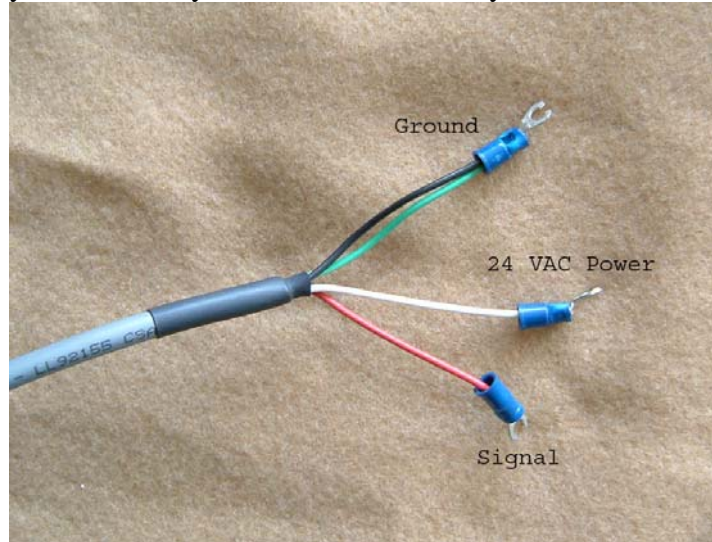
**Play / Pause** – Pressing the Play button will cause the JukeMP3 player to play a song in random order from the songs loaded onto it. If a song is playing, pressing the Play button will pause the playing of the song until another key is pressed.

**Function** – If there are no songs currently playing, pressing the Function button will display a menu of adjustable parameters such as Balance and Loudness. Use the Volume + and – keys to select the menu choice and the Play button to enter the particular menu. If a song is playing, pressing Function will stop the current song and start playing the next song loaded in the JukeMP3.

**Volume +/-** - Use these keys to step the volume up or down. You can repeatedly press the volume buttons, or you can hold the button in to slew the volume.

# Connecting your Wallbox

Connecting your wallbox to the JukeMP3 is very straightforward. The JukeMP3 comes with a 4-conductor cable that is terminated into 3 spade lugs. One lug has both the green ground wire and the black 24 VAC wire connected to it and this lead connects to your wallbox's ground terminal. The white wire is the other 24 VAC power lead and it connects to your wallbox's power terminal. The last lead, red is the wallbox signal lead. These are the only 3 wires that you have to connect to your wallbox!



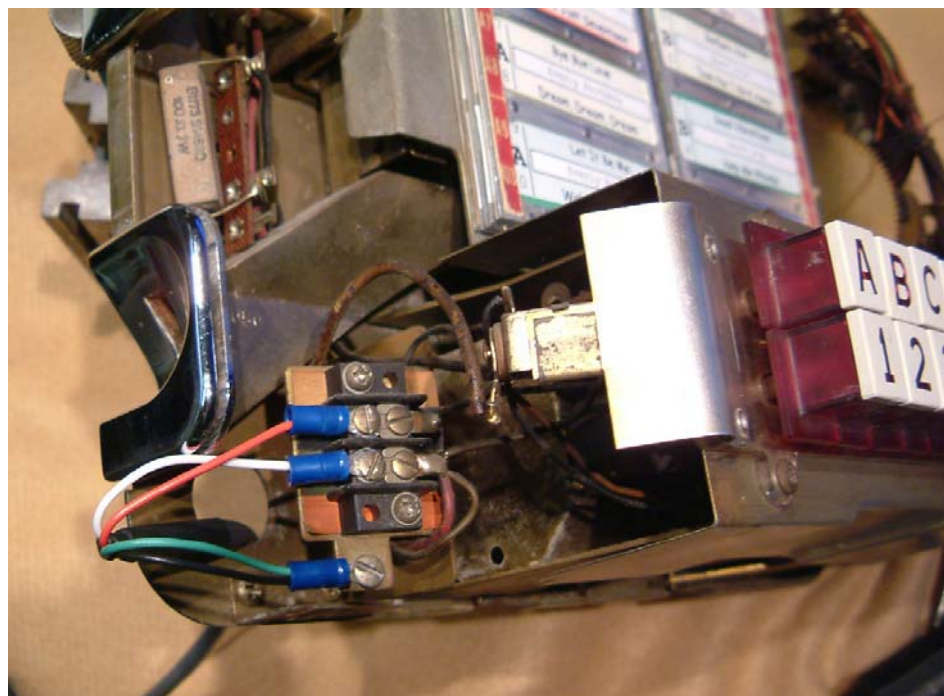
Wire Color	Purpose
Green	Signal Ground
Black	24 VAC
White	24 VAC
Red	Select Signal

**Find your wallbox in the following section and connect the three spade lugs to the indicated points.**

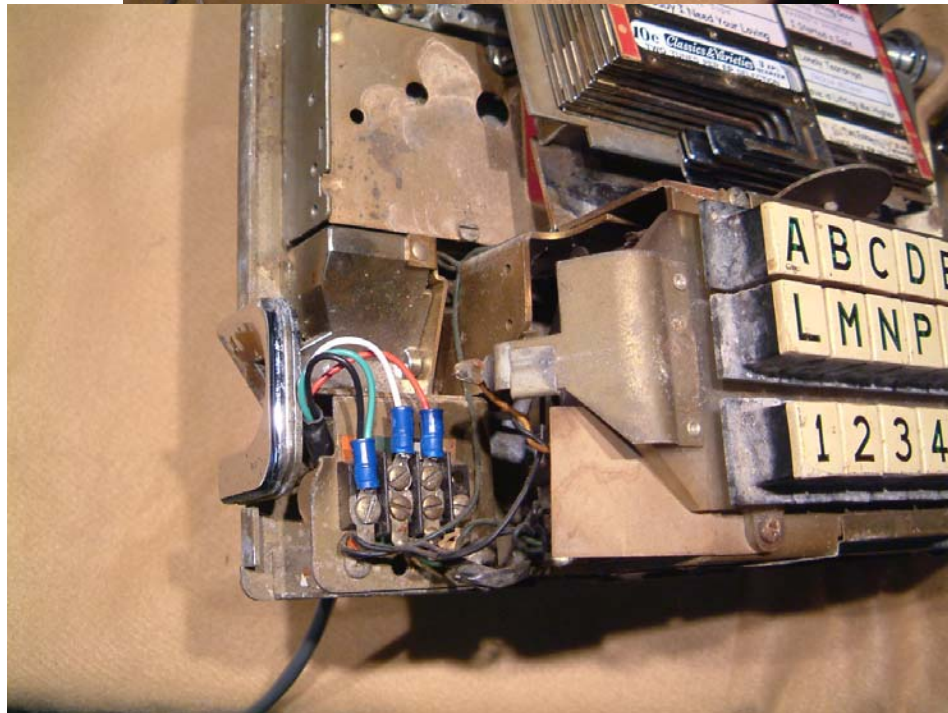
# Seeburg SC-1 160 Selection



# Seeburg 3W-100 100 Selection



# Seeburg S-3W 200 Selection



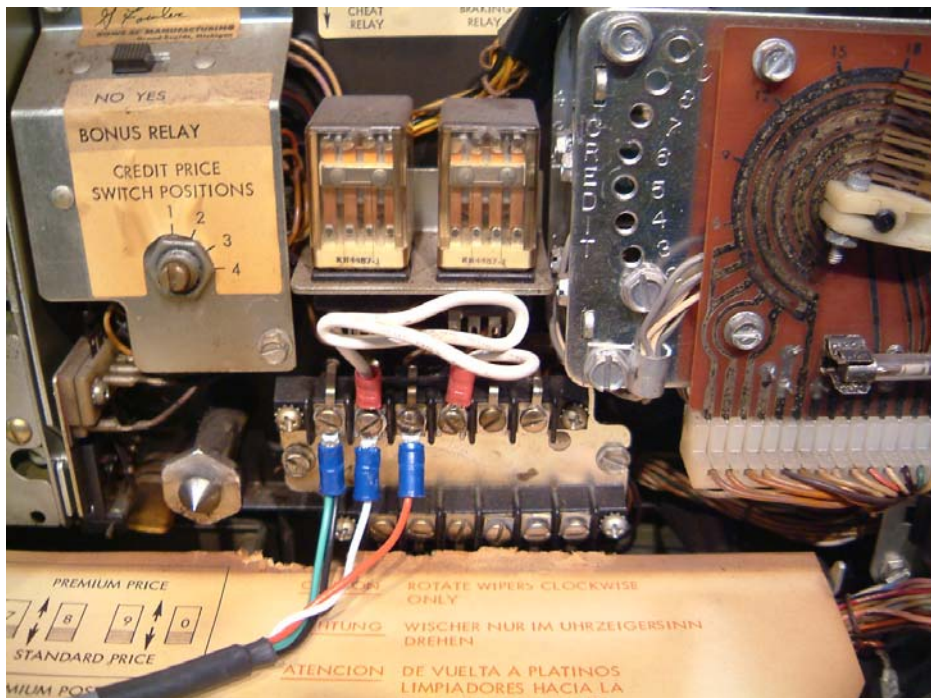


## AMI WQ-200 200 Selection



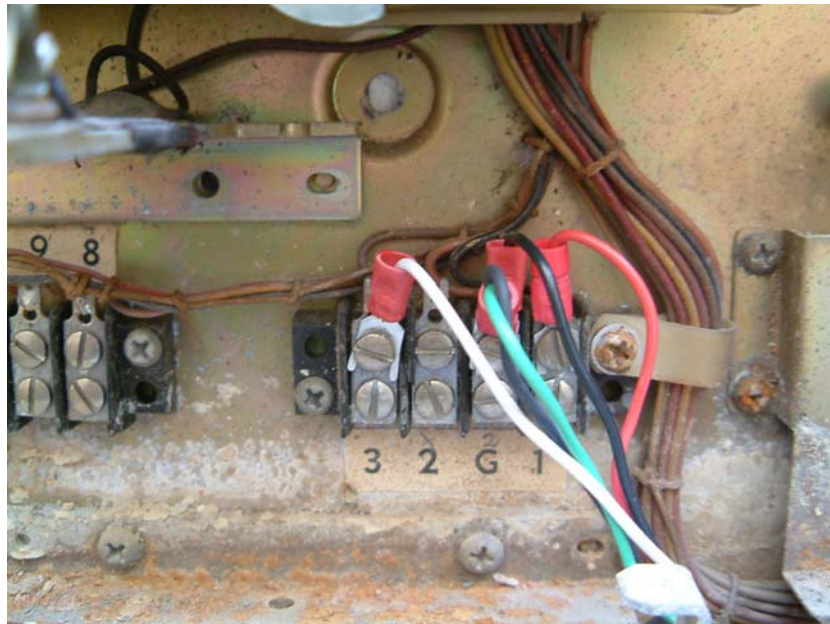
Notice on the AMI-WQ-200 there is a jumper wire from the right hand most terminal to the second terminal from the left. The white wire is also connected to the second terminal from the left.

## Rowe WRA/B/C-200 200 Selection



Notice on the Rowe WRA/B/C-200 there is a jumper wire from the fourth terminal from the left to the second terminal from the left. The white wire is also connected to the second terminal from the left.

# Wurlitzer 5225 100 Selection

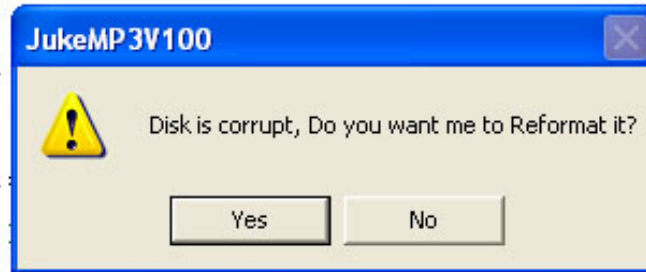


## Re-Initializing the Hard drive in your JukeMP3

In the event that the hard drive in your JukeMP3 becomes corrupted, you can force the JukeMP3 player to reformat the drive with the following technique:

1. Turn off the main power switch on the rear of the JukeMP3 player.
2. Press and hold the Volume – button on the player.
3. While holding the Volume – button, turn on the power to the JukeMP3 player. Continue holding the Volume – button until the message “Disk needs to be Formatted” appears on the JukeMP3’s screen.
4. After several seconds the message “Press Play to format the disk” message appears. Press the Play (green) button on the JukeMP3 player.
5. The message “All data will be lost Are you sure?” will appear on the display. Press the Play (green) button again.
6. “Formatting OK” will be displayed, followed by “JukeMP3 – Stop”. This completes the formatting of the hard drive.
- 7.

After formatting the hard drive in the JukeMP3 player, the JukeMP3 windows application will show the following message the next time it is started:



Press the Yes button to allow the windows application to high level format the hard disk drive in the JukeMP3 player. This may take a minute or so, so be patient.

## Links:

[PIEXX Order Page](#)