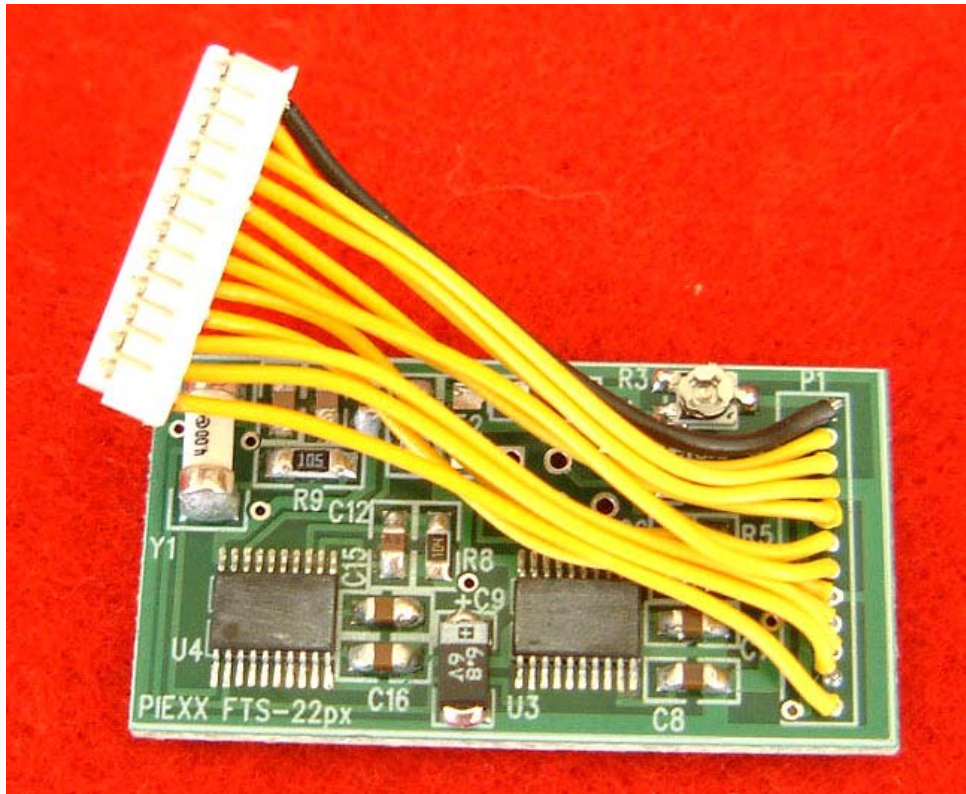




**PIEXX Co.**  
13 Main Street  
PO Box 123  
Hillsboro, NH 03244  
(603) 464-5411  
www.piexx.com

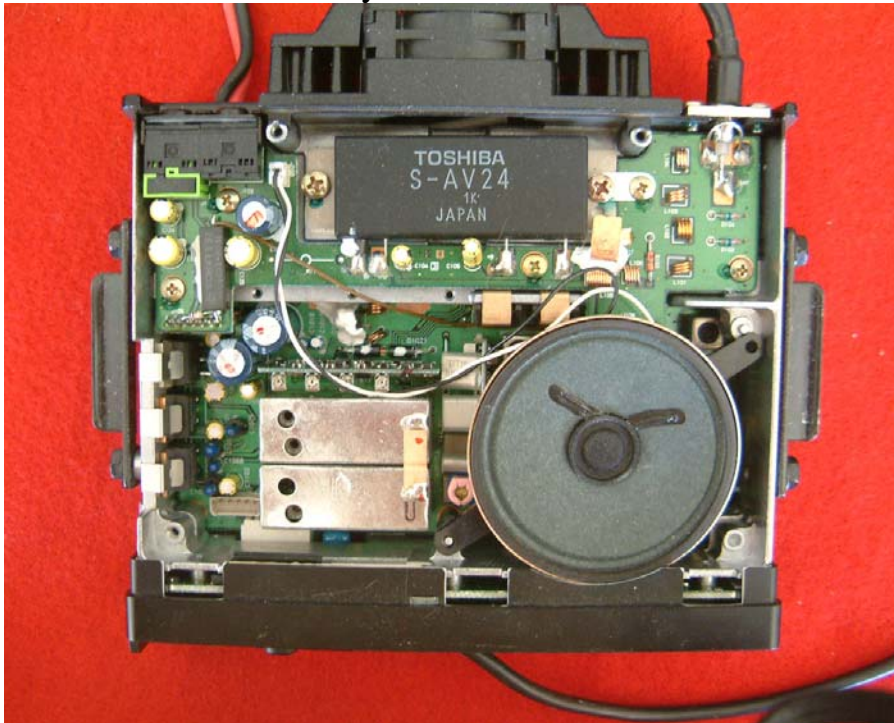
## **PIEXX FTS-22px Installation Instructions**



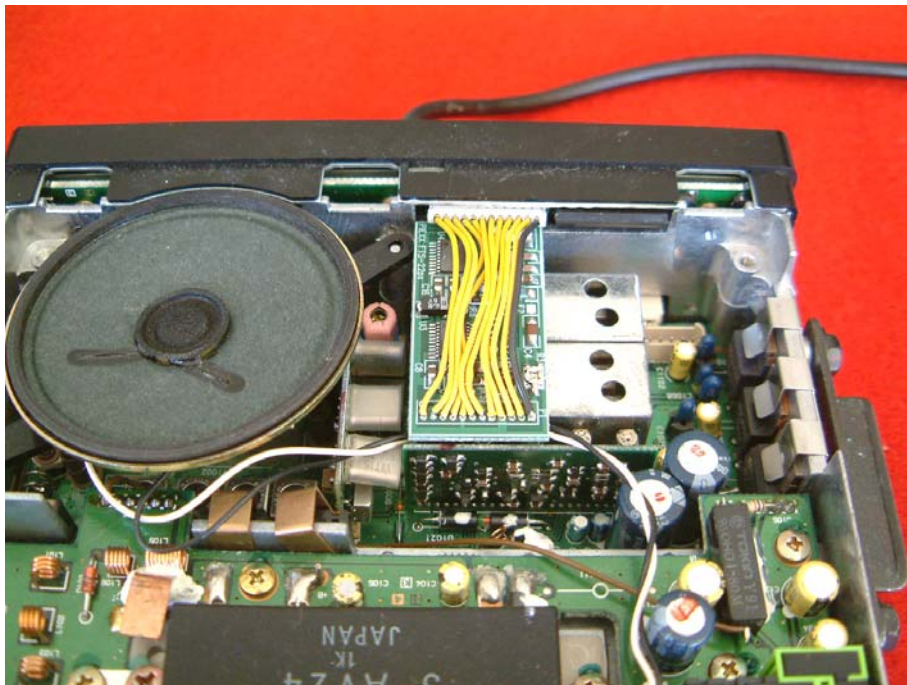
The PIEXX FTS-22px provides CTCSS tone encode and decode functions to a range of Icom transceivers including the FT-4600, FT-4800, FT-5100, FT-5200, FT-5800, FT-6200, FT-8000, FT-8100, FT-8500. The FTS-22px is a dual unit which allows separate CTCSS tone operation on both bands simultaneously. The PIEXX FTS-22px is an exact physical replacement and electrically equivalent to the original Yaesu FTS-22 dual tone encoder / decoder. As such, you may, and should, follow the original installation instructions that were provided with your transceiver pertaining to the installation of this option. As an example of a typical installation, shown below is the installation of the FTS-22px in a FT-5200 dual band transceiver.

**Note:** the pot on the FTS-22px is used for setting the transmit deviation of the CTCSS tone. This pot is preset at the factory to provide approximately .4 KHz of deviation.

1. Remove the bottom cover of your FT-5200 transceiver.



2. Locate the unused 12 pin white connector, J5005, inside the front panel of your transceiver.
3. Align and install the FTS-22px connector into J5005. Note that the black wire, on pin 1 of the connector, is located on the side of the J5005 connector closest to the side of the radio.



4. Use double-sided adhesive tape to attach the FTS-22px in place.
5. Reinstall the bottom cover of your transceiver.

