



**PIEXX Co.**  
13 Main Street  
PO Box 123  
Hillsboro, NH 03244  
(603) 464-5411  
www.piexx.com

## **PIEXX TSU-6px Installation Instructions**

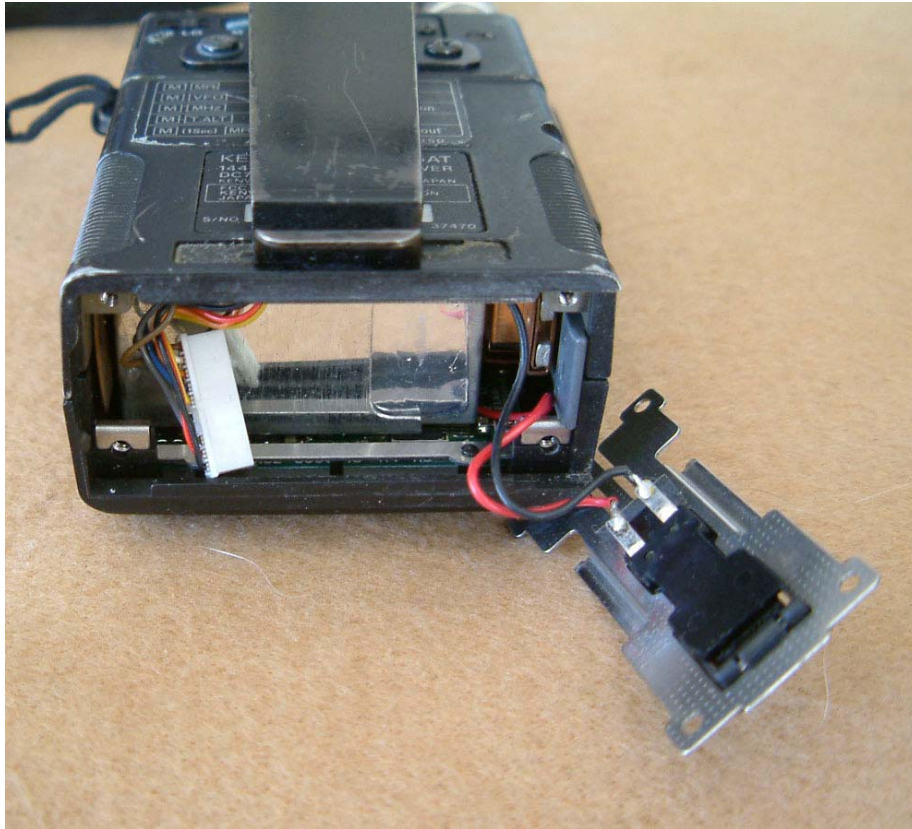


The PIEXX TSU-6px is an exact physical replacement and electrically equivalent to the original Kenwood TSU-6 tone encoder / decoder. As such, you may, and should, follow the original installation instructions that were provided with your transceiver pertaining to the installation of this option. In general, any jumper wires or jumper resistors that were originally installed in the connectors associated with the TSU-6 should be removed. The TSU-6px module will replace the functionality of these removed components. As an example of a typical installation, shown below is the installation of the TSU-6px in the TM-241A and TH-25AT transceivers.

**Note:** the pot on the TSU-6px is used for setting the transmit deviation of the CTCSS tone. This pot is preset at the factory to provide approximately .5 KHz of deviation.

### **Installation of the TSU-6px in the TH25AT transceiver**

1. Remove the battery pack.
2. Remove the four mounting screws that secure the battery mounting track. Remove the track.
3. Find the 10 position cable end connector. This connector will most likely have a piece of clear tubing covering it. Remove this clear tubing and the 1/8 watt resistor that is plugged into the connector. This resistor provided continuity in the audio path that will now be provided by the TSU-6px.



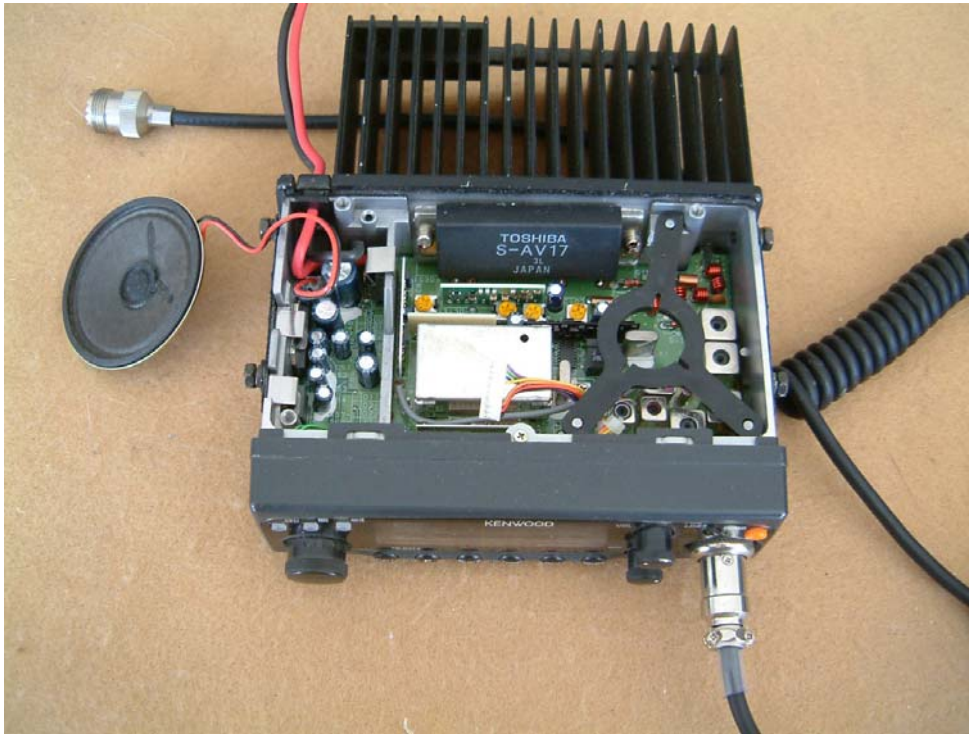
4. Insert the 10 position connector into the mating receptacle on the TSU-6px.
5. The TSU-6px can be ordered with or without the double sided tape for mounting. in the TH series of radios you should order the TSU-6px less this tape. If yours has the double sided tape, you should remove it.
6. Locate the TSU-6px in the cavity of the TH25AT radio. Route the connector wires so the TSU-6px lays as flat as possible in the TH-25AT.



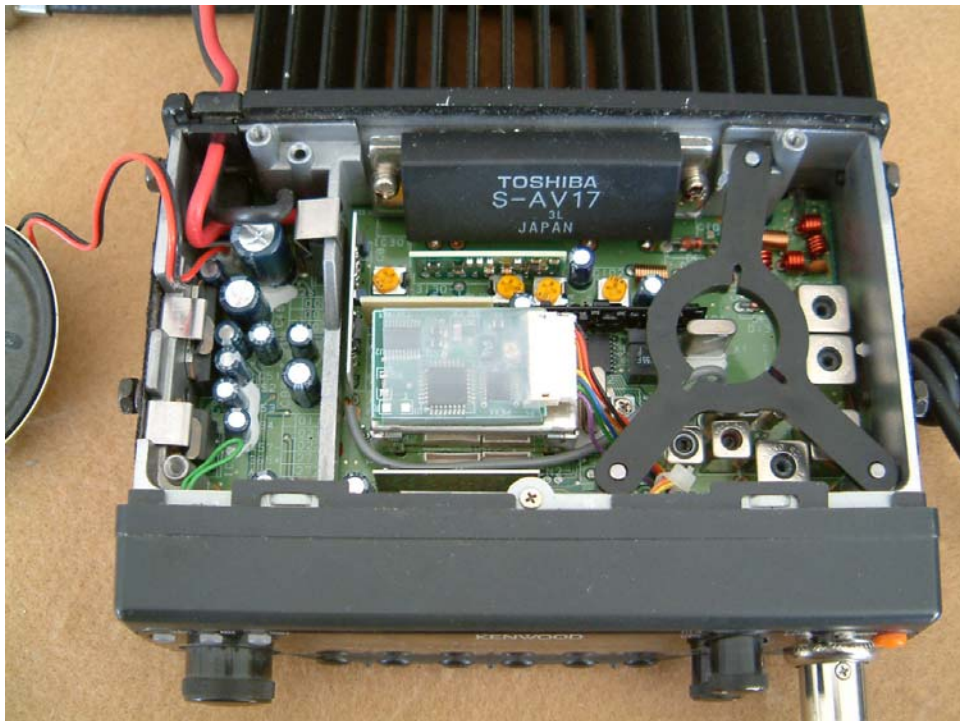
7. Complete the installation by reinstalling the battery mounting track and battery pack.

## Installation of the TSU-6px in the TM-241A transceiver

1. Remove the two screws holding on the top cover of the TM-241A transceiver, and then remove the top cover.
2. Find the 10 position cable end connector coming from the front of the radio near the speaker.



3. Insert the 10 position connector into the mating receptacle on the TSU-6px.
4. If you ordered the TSU-6px with the double sided tape, remove the tape backing and mount the tone board on the shield cover. If you did not order the TSU-6px with the tape you will need to find some double sided tape at your local hardware store to mount the tone board with.



5. Complete your TSU-6px installation by reinstalling the transceivers cover.