

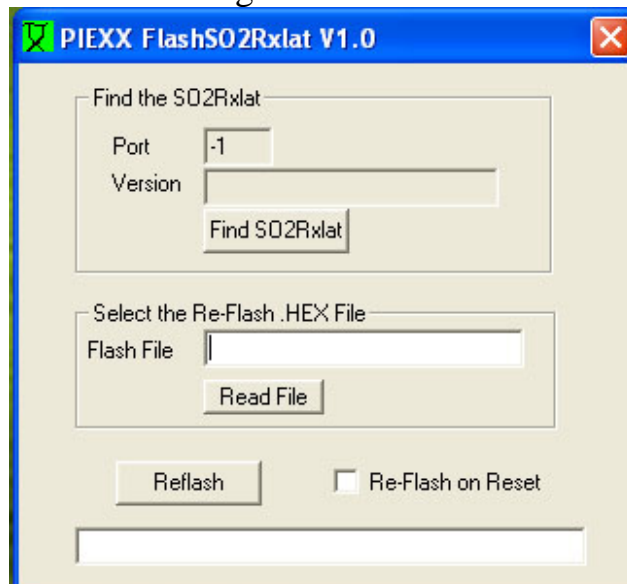


PIEXX Company
13 Main Street
PO Box 123
Hillsboro, NH 03244
(603) 464-5411

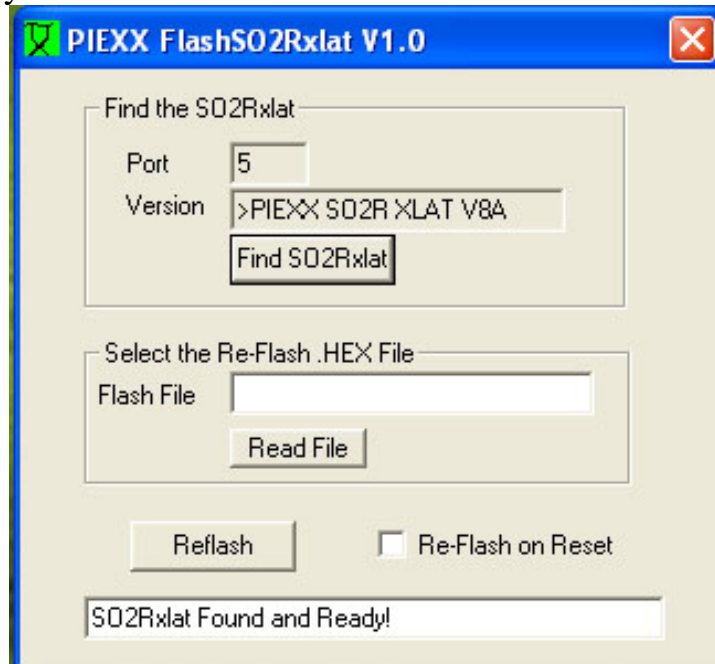
Re-Flash Procedure for PIEXX SO2Rxlat

Re-flashing the PIEXX SO2Rxlat is a very straight forward process with the tools we provide. Please follow the steps as indicated below. In order for this procedure to work you must, obviously, have your SO2Rxlat plugged into your computers USB port, and all of the appropriate drivers installed on that PC as outlined in the installation instructions provided with the SO2Rxlat. Do not unplug, or power down your PC or the SO2Rxlat during the re-flash process. If you do, then there is a chance the SO2Rxlat will need to have the boot loader reinstalled by PIEXX!

1. Download the SO2Rxlat flash .zip files from:
<http://www.piexx.com/so2rxlat/so2rxlatreflash.zip>
2. Extract the zipped files to a convenient spot on your PC. You will need to know where these files end up on your PC, so be mindful of this during the extraction process.
3. Execute the (double click) the FlashSO2R.exe program file from the location you extracted the .zip files to. You should see the following:



4. Next, press the Find SO2Rxlat button in the PIEXX FlashSO2Rxlat dialog box. Your PC will search the available com ports and locate your SO2Rxlat device. This is also a handy way to find where your SO2Rxlat lives, even if you don't plan on re-flashing it. After the program has found your SO2Rxlat you should see:



As you can see the SO2Rxlat was found on com port 5 and is ready to be re-flashed. If your SO2Rxlat was found, but is missing the boot loader, you will see a message to that effect, and the SO2Rxlat will need to be returned to PIEXX to have the boot loader installed. If the SO2Rxlat is not found, you either have a communications program running that is using the com port the SO2Rxlat is on, shut it down if so, or the SO2Rxlat is not plugged in with its driver installed. Refer to the installation part of your SO2Rxlat manual to remedy this.

5. Next you will need to tell the re-flash program which file to use as the source for the re-flash operation. This file will reside at the directory location that you unzipped the files to in step 2 (the same place that you executed the re-flash program from) and will have the extension .hex. We will use the file SO2RxlatV8A.hex as an example, but it may be different as newer firmware is generated. Delete any text that is in the Flash File data box, there shouldn't be any at this point anyway, and press the Read File button. You will see a normal windows style file open dialog box. Select the SO2RxlatV8A.hex file and click the open button. Your display should now look like this:



- Next, press the Reflash button. Do not interrupt this process once started!! As the SO2Rxlat re-flashes you will see the program pages count up (to a bit over 100 pages):





When the re-flash process has completed, the status message will tell you that the Re-Flash is successful.

7. Exit the PIEXX FlashSO2Rxlata program before you begin testing with your application program.